

# Kitchen, Bathroom and separation for the basement

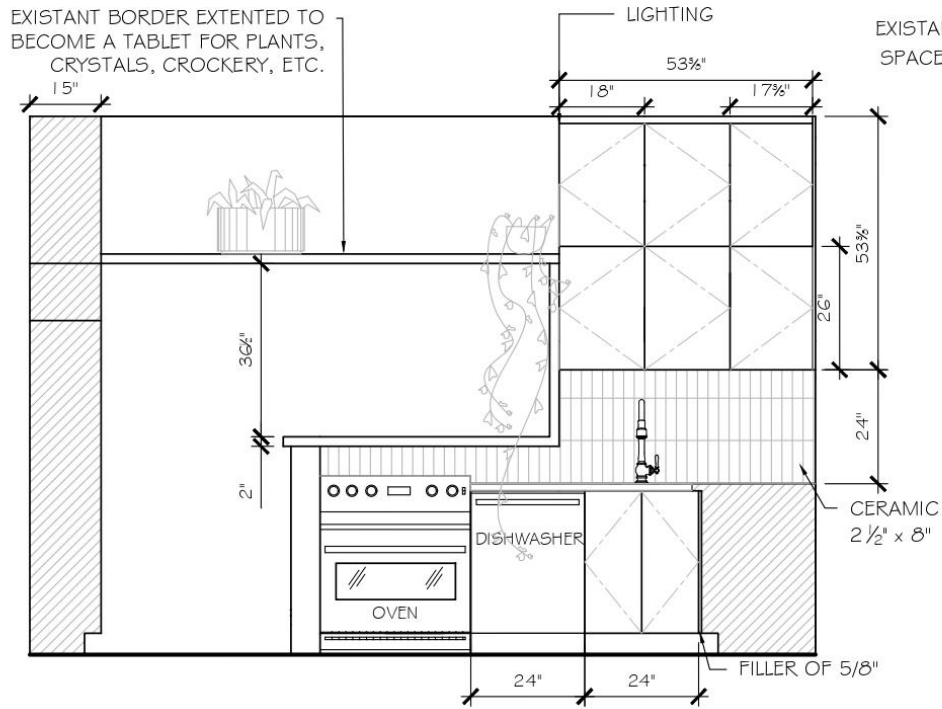
For Kim Hendi and Richard St-Louis

May 19th 2022

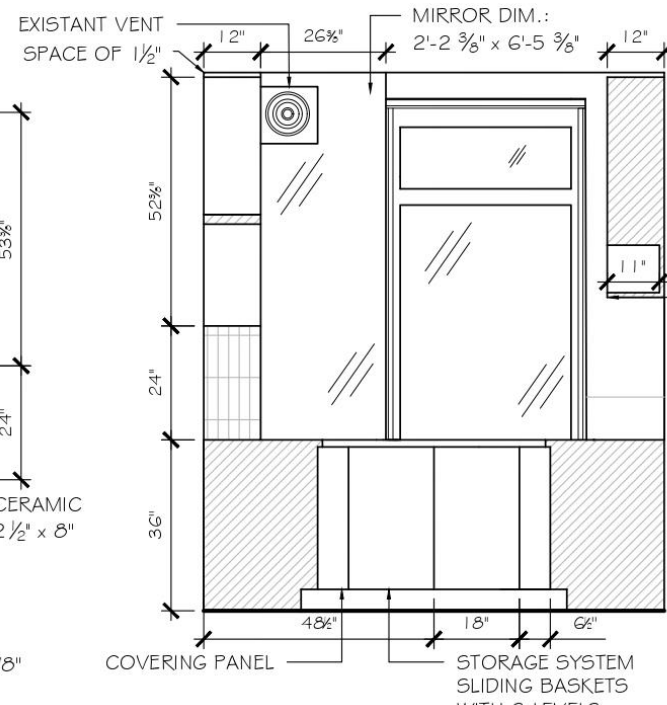
By Marianne Labonté



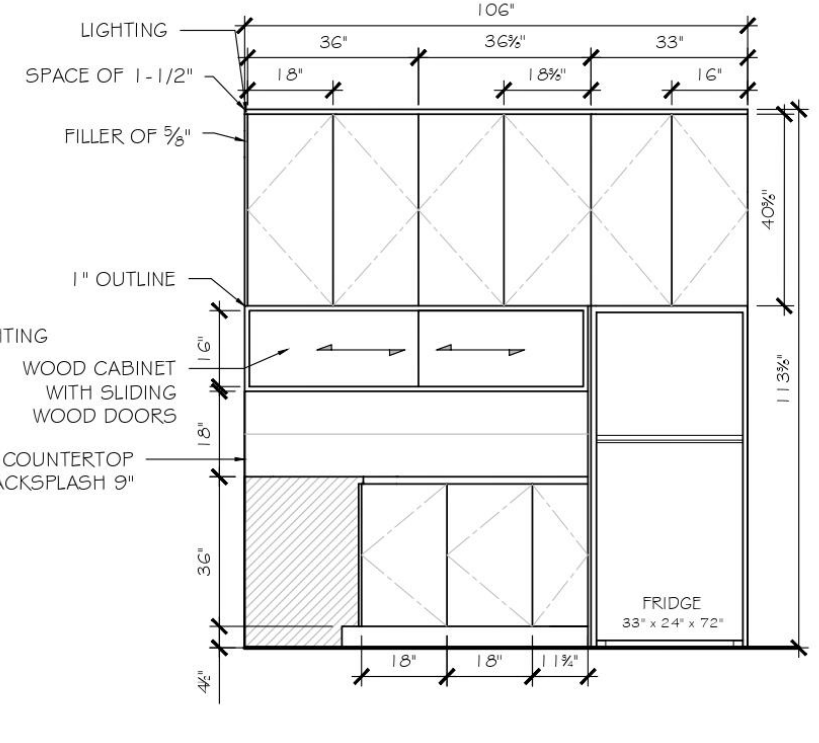
EXISTANT BORDER EXTENDED TO BECOME A TABLET FOR PLANTS, CRYSTALS, CROCKERY, ETC.



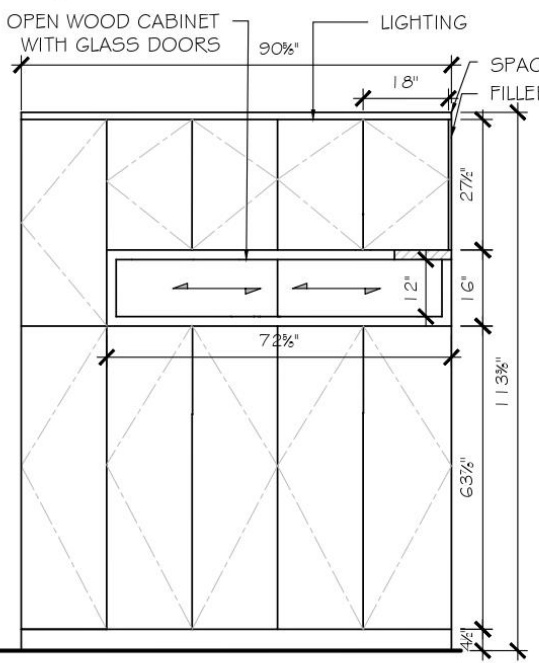
E1 KITCHEN ELEVATION OVEN, DISHWASHER AND SINK  
SCALE : 3/8" = 1' - 0"



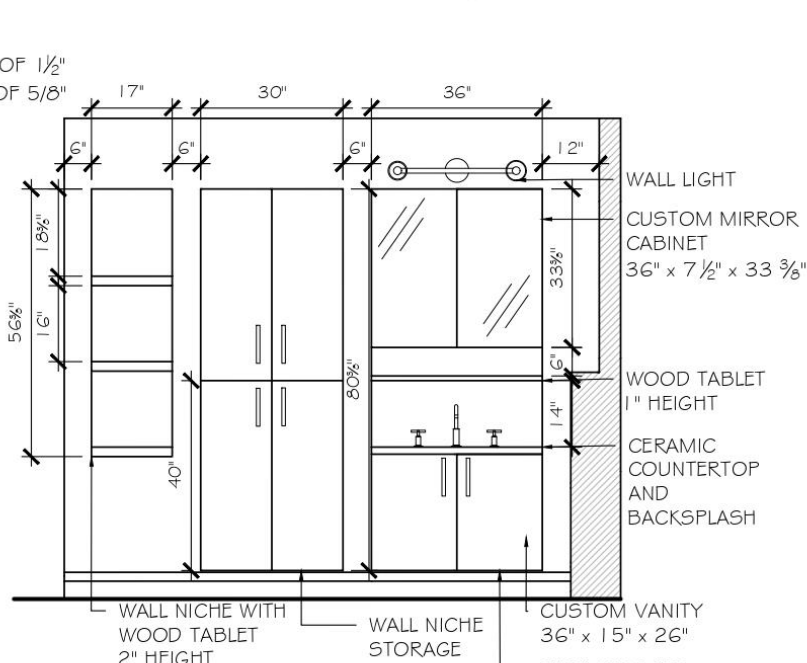
E2 KITCHEN ELEVATION WINDOW WALL  
SCALE : 3/8" = 1' - 0"



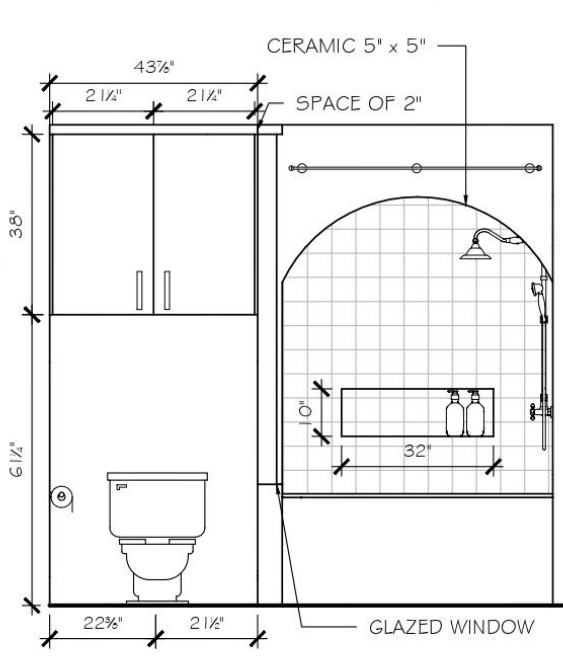
E3 KITCHEN ELEVATION FRIDGE WALL  
SCALE : 3/8" = 1' - 0"



E4 KITCHEN ELEVATION PANTRY CABINET  
SCALE : 3/8" = 1' - 0"



E5 BATHROOM ELEVATION VANITY WALL  
SCALE : 3/8" = 1' - 0"



E6 BATHROOM ELEVATION TOILET AND SHOWER  
SCALE : 3/8" = 1' - 0"

NOTES:  
1. ALL THE CABINET DOORS ARE PUSH OPEN DOORS  
2. ALL THE SPECIFICATIONS ABOUT THE MATERIALS, FINISHES, FAUCETS, ETC. ARE IN THE PRESENTATION DOCUMENT

PROGRAMME ET CÉGEP:  
**CO** CÉGEP DE L'OUTAOUAIS  
DESIGN D'INTÉRIEUR

TITRE DU PROJET:  
PROPOSITION D'AMÉNAGEMENT DE LA CUISINE, DE LA SALLE DE BAIN ET D'UNE SÉPARATION SOUS-SOL  
25-1 DELAWARE AVE, OTTAWA, ON

TITRE DU DESSIN:  
ÉLÉVATIONS CUISINE OPTION 1  
ET SALLE DE BAIN

DESSINÉ PAR:  
MARIANNE LABONTÉ

DATE:  
19 MAI 2022

ÉCHELLE:  
3/8" = 1' - 0"

PAGE:  
2/4

# Kitchen

Layout Option 1 - Oven, dishwasher and sink on the same wall



# Kitchen

Layout Option 1 - Oven, dishwasher and sink on the same wall



# Kitchen

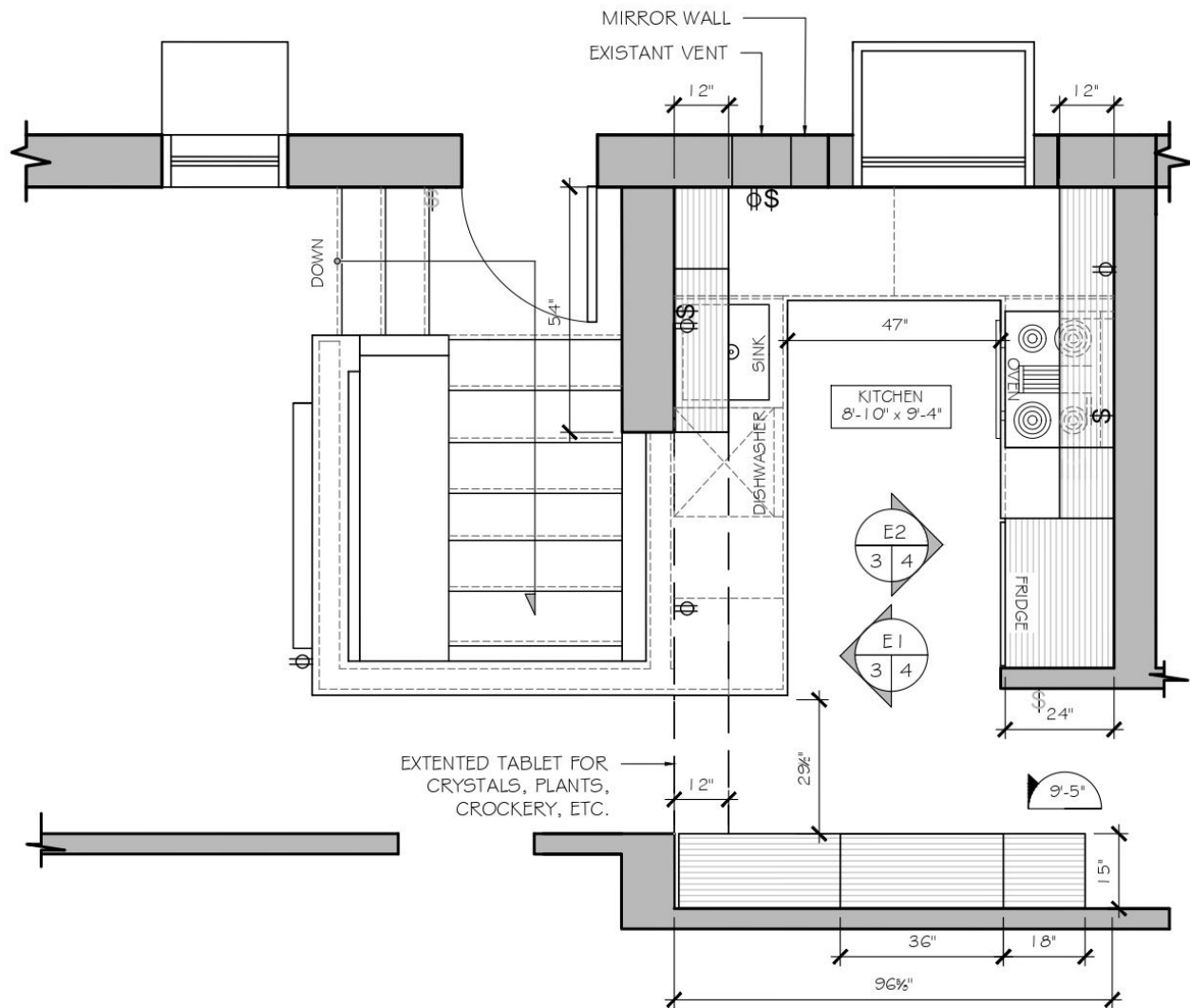
Layout Option 1 - Countertop space beside the fridge and wood cabinet with sliding doors





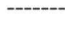

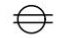
# Pantry

White cabinet doors with glass open wood cabinet





LEGEND:

-  LEVEL BUBBLE
-  ROOM IDENTIFICATION
-  HIDDEN LINE
-  LIGHT SWITCH
-  ELECTRIC OUTLET

LAYOUT PLAN OPTION 2

SCALE : 3/8" = 1' - 0"

PROGRAMME ET CÉGEP:

 CÉGEP DE L'OUTAOUAIS  
DESIGN D'INTÉRIEUR

TITRE DU PROJET:

PROPOSITION D'AMÉNAGEMENT DE LA CUISINE, DE LA  
SALLE DE BAIN ET D'UNE SÉPARATION SOUS-SOL  
25-1 DELAWARE AVE, OTTAWA, ON

TITRE DU DESSIN:

PLAN D'AMÉNAGEMENT OPTION 2

DESSINÉ PAR:

MARIANNE LABONTÉ

DATE:

19 MAI 2022

ÉCHELLE:

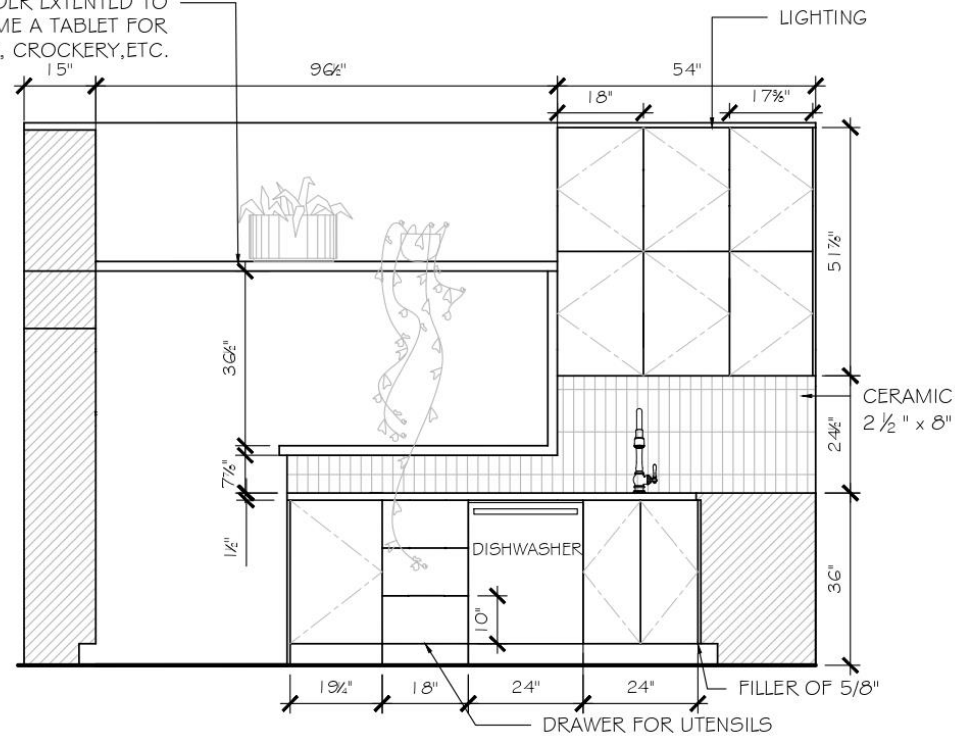
3/8" = 1' - 0"

PAGE:

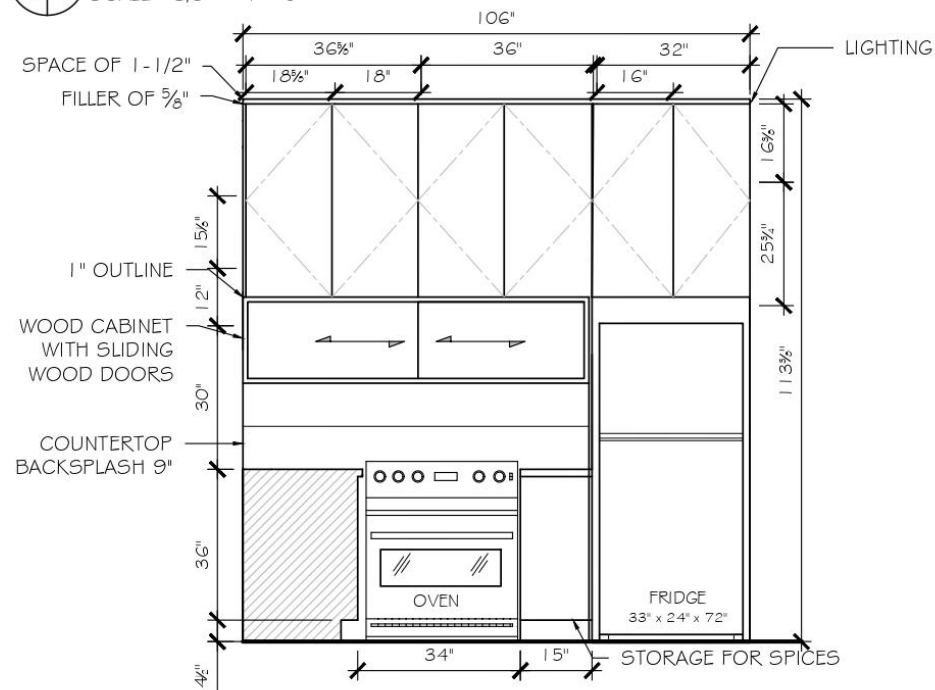
3/4



EXISTANT BORDER EXTENDED TO  
BECOME A TABLET FOR  
PLANTS,CRYSTALS, CROCKERY,ETC.



E1 KITCHEN ELEVATION DISHWASHER AND SINK WALL  
3/4 SCALE : 3/8" = 1' - 0"



E2 KITCHEN ELEVATION OVEN AND FRIDGE WALL  
3/4 SCALE : 3/8" = 1' - 0"

NOTES:

1. ALL THE CABINET DOORS ARE PUSH OPEN DOORS
2. ALL THE SPECIFICATIONS ABOUT THE MATERIALS, FINISHES, FAUCETS, ETC. ARE IN THE PRESENTATION DOCUMENT
3. REFER TO OPTION 1 FOR THE SPACES THAT AREN'T DRAWN FOR OPTION 2

PROGRAMME ET CÉGEP:

 CÉGEP DE L'OUTAOUAIS  
DESIGN D'INTÉRIEUR

TITRE DU PROJET:

PROPOSITION D'AMÉNAGEMENT DE LA CUISINE, DE LA  
SALLE DE BAIN ET D'UNE SÉPARATION SOUS-SOL  
25-1 DELAWARE AVE, OTTAWA, ON

TITRE DU DESSIN:

ÉLÉVATIONS CUISINE ET SALLE DE BAIN  
OPTION 2

DESSINÉ PAR:

MARIANNE LABONTÉ

DATE:

19 MAI 2022

PAGE:

4/4

ÉCHELLE:

3/8" = 1' - 0"

# Kitchen

Layout Option 2 - Oven on the fridge wall with a spacious countertop



# Kitchen

Layout Option 2 - Oven on the fridge wall with a spacious countertop



# Kitchen

Layout Option 2 - Oven on the fridge wall and wood cabinet with sliding doors



# Kitchen

## Materials



Sink faucet  
Cie.: Kohler  
Color: Polished chrome  
Model: Artifacts  
K-29709-WB-CP



Ceramic tiles 2 1/2" x 8"  
Cie.: Centura  
Collection: La Riviera  
Color: Blue reef glossy  
Grout: White



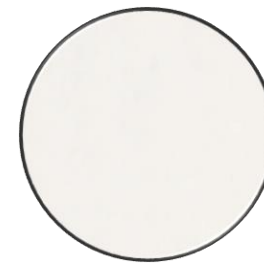
Wall hanging light  
Cie.: Luminaire  
Authentik  
Model: Dome 12-LA00  
Color: Glossy Iceberg  
Wire : White fabric



Tablet recover with  
dark walnut wood



Quartz Countertop  
Cie.: Caesarstone



Cabinet Material  
Color: Egg shell white  
Material : Polymer

# Bathroom

Wall niche storage with tablets, cupboard and custom wall-hung vanity



# Bathroom

Storage cabinet and bath - shower

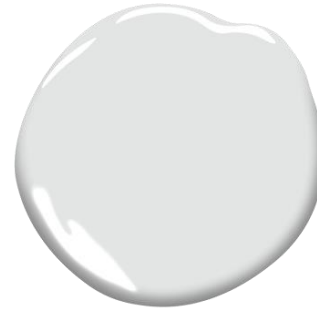


# Bathroom

## Materials

Cabinet Material

Color: Egg shell white  
Material : Polymer



Wall paint

Cie. : Benjamin Moore  
Color: Steam AF-15



Bathroom Faucet

Cie.: Kohler  
Color: Polished  
Chrome  
Model: Purist  
K-14406-3-CP



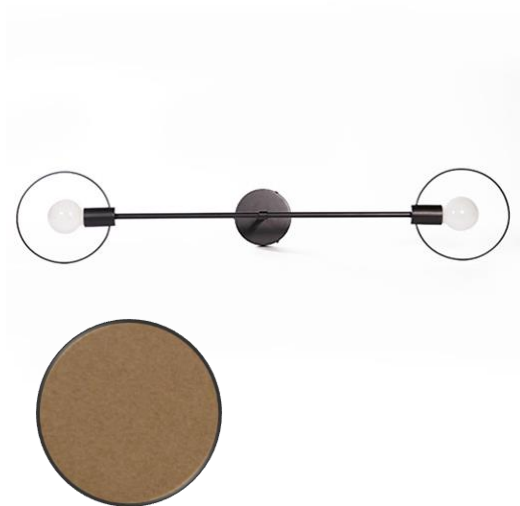
Shower Ceramic  
Tiles 5'' x 5''

Cie.: Centura  
Collection: La Riviera  
Color: Mix of white  
and cloud gray glossy  
Grout: White



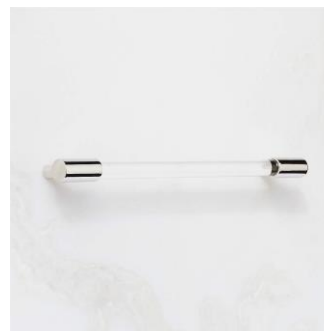
Porcelain Floor  
12'' x 24''  
And Vanity  
Countertop

Cie.: Cerasec  
Color : Smoke



Wall Light

Cie.: Luminaire  
Authentik  
Color: Matte bronze  
Model: LUNA 08-LA52



Handle

Cie.: CB2  
Color: Polished nickel and  
crystal handle  
Model: FLYNN 460802



Shower Faucet

Cie.: Rona  
Color: Chrome  
Model: CF028B



# Separation for the basement

Decorative panels hung from the ceiling

The decorative panels would be hanging on hooks on the ceiling.

The panels could stay there to make a nice effect with the light or they could be taken off as preference.

They could be designed by an artistic wood worker or they could be made DIY.

They would be attached together by a flexible wire/thread.

If you don't want the panels to hang, the possibility of installing hooks on the half wall so they are stable is an option.

